

POTENT ACADEMY REVISION SERIES

INTEGRATED SCIENCE

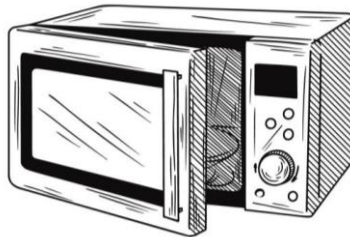
GRADE 9 | MODEL 02

Name _____ **Date** _____

Instructions: Answer ALL the questions in the spaces provided.

1. Outline 2 workable plans to manage developmental changes during adolescence.

2. The following are some electrical appliances used in daily life. Identify them.

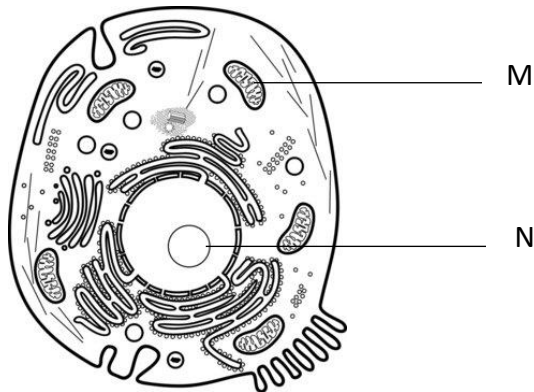


a. _____ b. _____

- 3.
- a. Namu was asked to describe the composition of alloys during a discussion session. What did he say?
 - b. Kamau and his study group were discussing the uses of metals and alloys in day to day life. Write 2 of their possible points of discussion.

4. Explain the meaning of pressure as used in Science.

5. Below is a drawing of an animal cell as seen under the light microscope. Identify the labelled parts M and N



6. Boi listed the factors that affect osmosis on the whiteboard. Write 2 of them.
7. Write one similarity between a plant cell and an animal cell.
8. A bacteria viewed under a light microscope is 5 cm long. The actual length of the cell is 4 micrometers. Calculate the magnification.
9. Describe one use of each of the following gases.
- Inert gases
 - Nitrogen
10. Kicheche listed some basic skills learnt in Science. Write 2 of them.