

**POTENT ACADEMY REVISION SERIES**

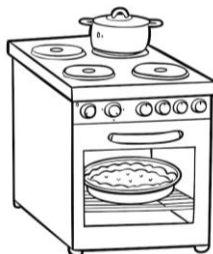
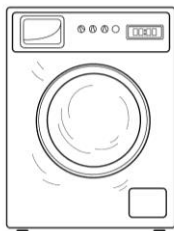
**INTEGRATED SCIENCE**

**GRADE 9 | MODEL 03**

**Name** \_\_\_\_\_ **Date** \_\_\_\_\_

*Instructions: Answer ALL the questions in the spaces provided.*

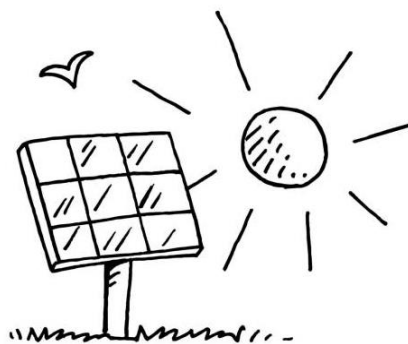
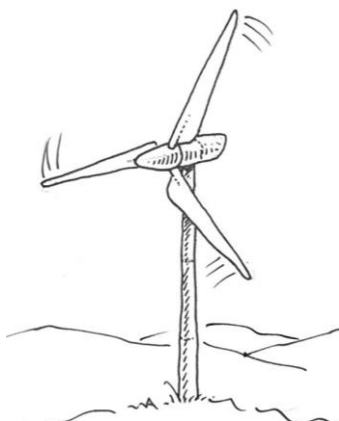
1. The following are some electrical appliances used in daily life. Identify them.



a. \_\_\_\_\_ b. \_\_\_\_\_

2. Give 2 characteristics of the cell membrane.
3. In the space provided below, draw the electron arrangement of a Chlorine atom.
4. Write two differences between a plant cell and an animal cell.
5. Explain the role of oxygen in combustion and spread of fire.

6. Identify the forms of energy symbolized by each of the following diagrams.



7. You have been called upon to discuss ways of softening hard water in day to day life. What would you say?

8. Fill the table below appropriately

Advantages of soft water	Disadvantages of hard water
iii.	iii.
iv.	iv.

9. Explain the meaning of pressure as used in science

10. Muli wrote short notes on physical properties of oxygen. Write 2 of the points he may have written