

**POTENT ACADEMY REVISION SERIES**

**INTEGRATED SCIENCE**

**GRADE 8 | MODEL 05**

**Name** \_\_\_\_\_ **Date** \_\_\_\_\_

---

*Answer ALL the questions in the spaces provided:*

1. State two control measures of the fire in day to day life. (2 marks)

---

---

2. List down properties of (3marks)

(a) Solids \_\_\_\_\_

\_\_\_\_\_

(b) Liquids \_\_\_\_\_

\_\_\_\_\_

(c) Gases \_\_\_\_\_

\_\_\_\_\_

3. When ice is heated, it changes to on cooling it turns to (2 marks)

---

---

4. What is the colour of (3 marks)

a. Hydrated copper (II) Sulphate \_\_\_\_\_

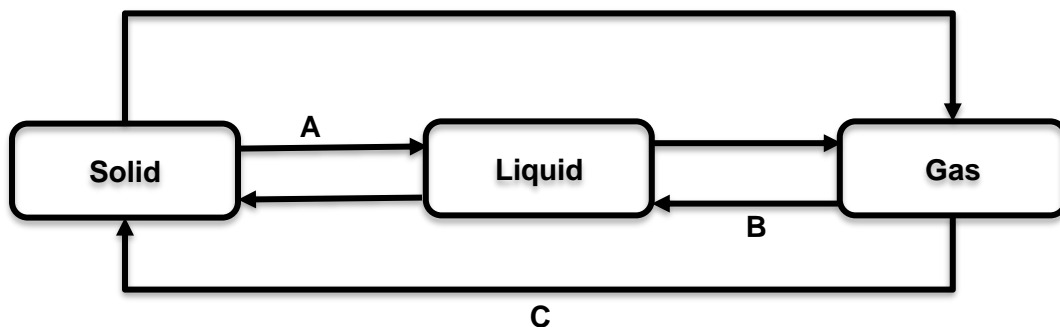
b. Anhydrous copper (II) Sulphate \_\_\_\_\_

c. Water \_\_\_\_\_

5. Name two characteristics of a permanent chemical change. (2 marks)

---

6. Name the processes marked A, B and C in the chart below. (3 marks)



A \_\_\_\_\_

B \_\_\_\_\_

C \_\_\_\_\_

7. Classify the following into elements and compounds. (4 marks)

(d) Water \_\_\_\_\_

(e) Silver \_\_\_\_\_

(f) Iron \_\_\_\_\_

(g) Sulphur (IV) Oxide \_\_\_\_\_

8. Fill in the gaps with the correct chemical symbol. (5 marks)

<u>Element</u>	<u>Symbol</u>
(a) Manganese	Mn
(b) Oxygen	_____
(c) Neon	_____
(d) Sodium	_____
(e) Nitrogen	_____
(f) Iron	_____

9. Write down uses of the following common elements and compounds. (4 marks)

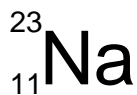
(a) Oxygen \_\_\_\_\_

(b) Sodium Chloride \_\_\_\_\_

(c) Neon \_\_\_\_\_

(d) Ammonium Phosphate \_\_\_\_\_

10. In the symbol of element shown below. (3 marks)



a. Which element is this \_\_\_\_\_

b. The mass number is \_\_\_\_\_

c. The atomic number is \_\_\_\_\_